

CANONICAL



Welcome to Ubuntu Developer Day



CANONICAL

Ubuntu Server Overview

Ubuntu Developer Day

January 2011

Presentation by
Nick Barcet
Cloud Solutions Lead
nick.barcet@canonical.com



Maintenance and bug fixes

Security patches

web hosting

application
serving

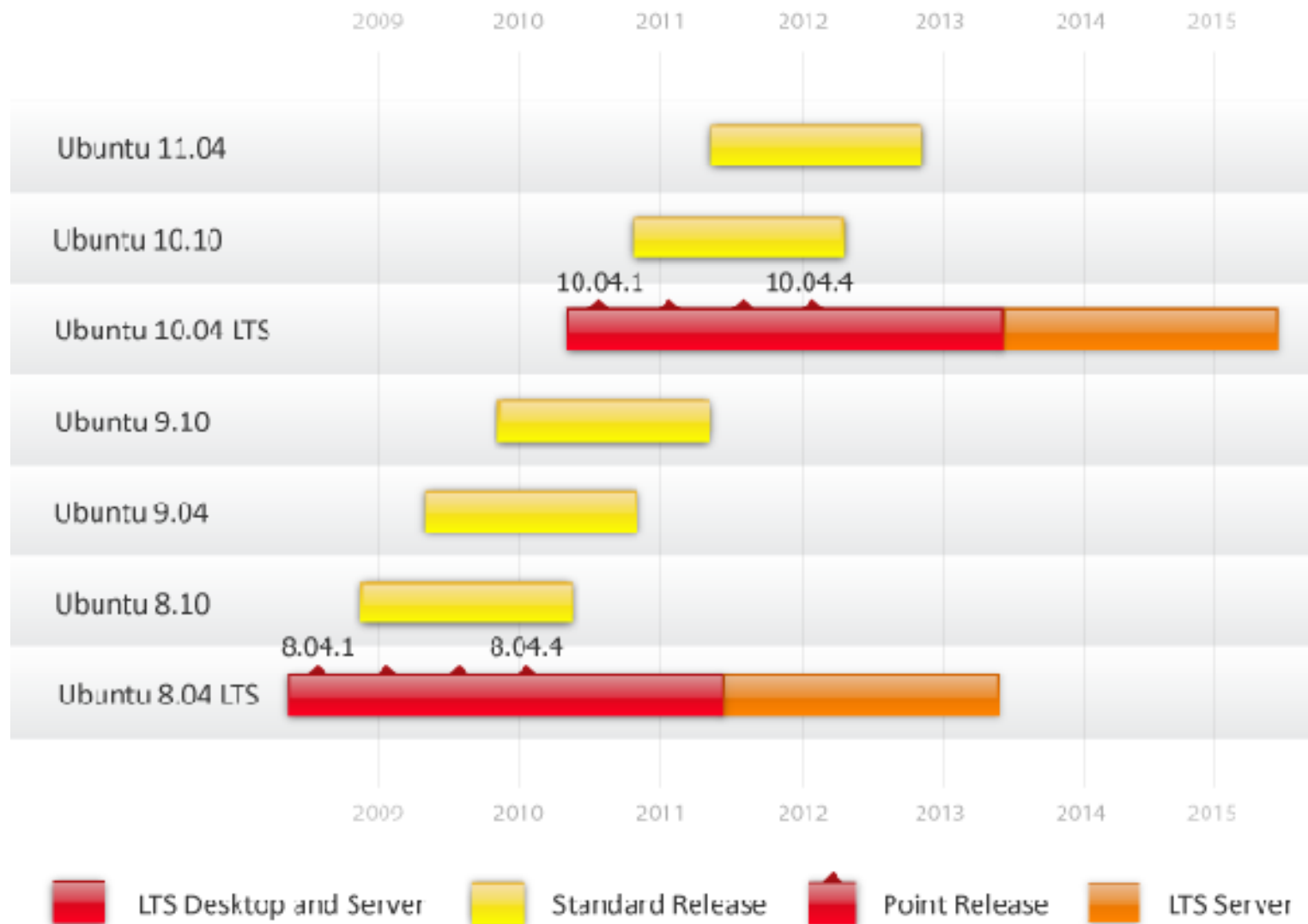
file & print

common
infrastructure

virtualisation
&
cloud
computing

core platform

Product Life Cycle





Simple to deploy

- Automated installation tools (preseed & kickstart)
- Repository mirroring tools (apt-mirror)
- Network installation tools



Advanced storage capabilities

- Software and Hardware RAID support inside the installer
- Logical Volume Manager (LVM)
- iSCSI initiator and target support
- Device-Mapper-Multipath & support for large range of HBA's (Host Bus Adaptors)



Ready for virtualisation

- KVM – Kernel Virtual Machine technology
- Libvirt
- KSM – Kernel Same-page Merging – Memory sharing
- Live Migration



Harden your server infrastructure

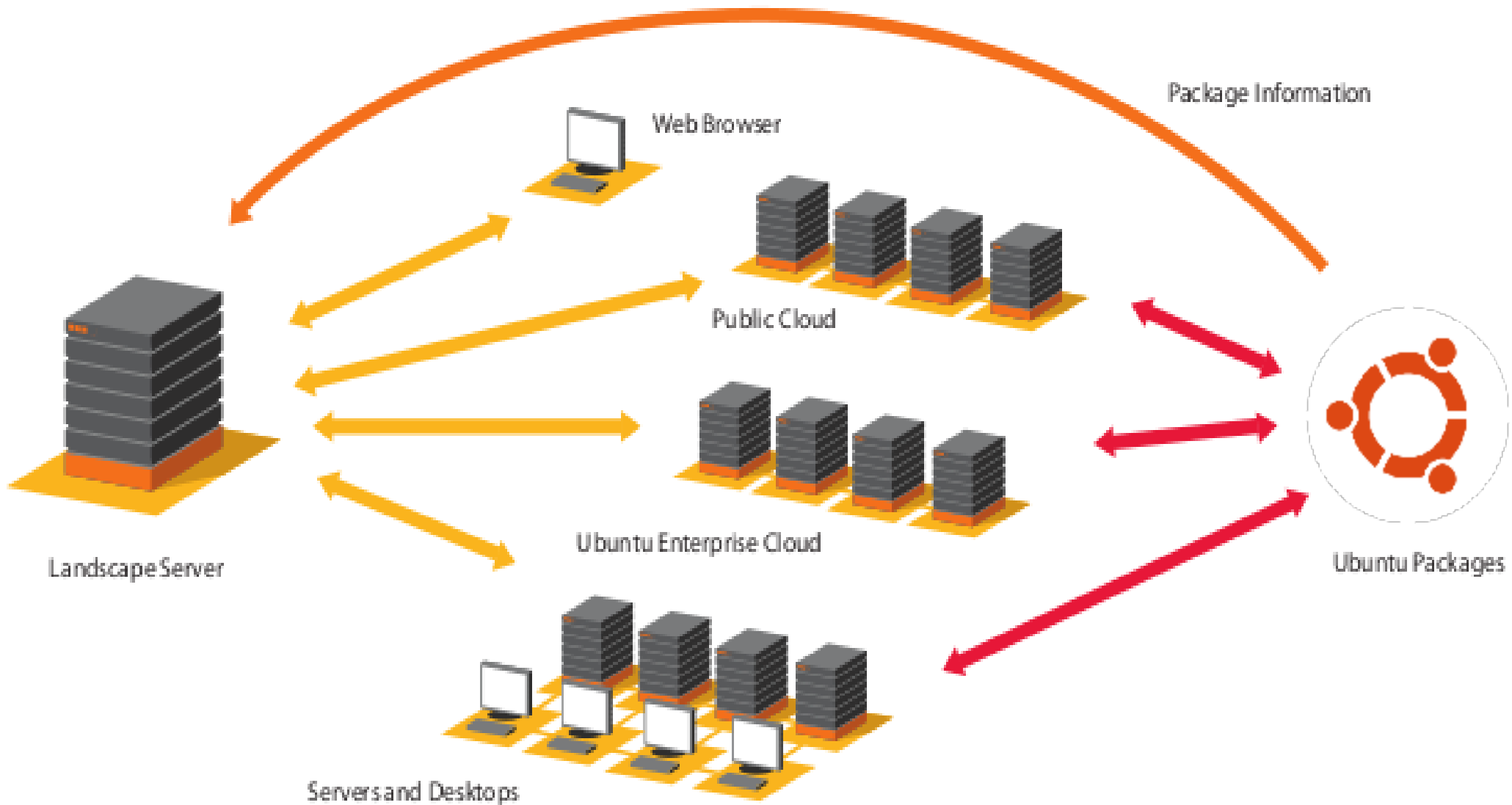
- Five years of security and maintenance updates
- AppArmor security by default on key packages
- Uncomplicated Firewall (UFW)
- Directory encryption



Simple to manage

- Configuration Management integration
- Version control of /etc with etckeeper
- Full systems management from the Landscape platform

Landscape Systems Management





Scalable resources on-demand

- Ubuntu is integrated into the Amazon EC2 infrastructure
- Ubuntu Enterprise Cloud (UEC) gives you the power of EC2 within your own data centre
- Pre-built images for EC2 and UEC

Ubuntu Enterprise Cloud (UEC)

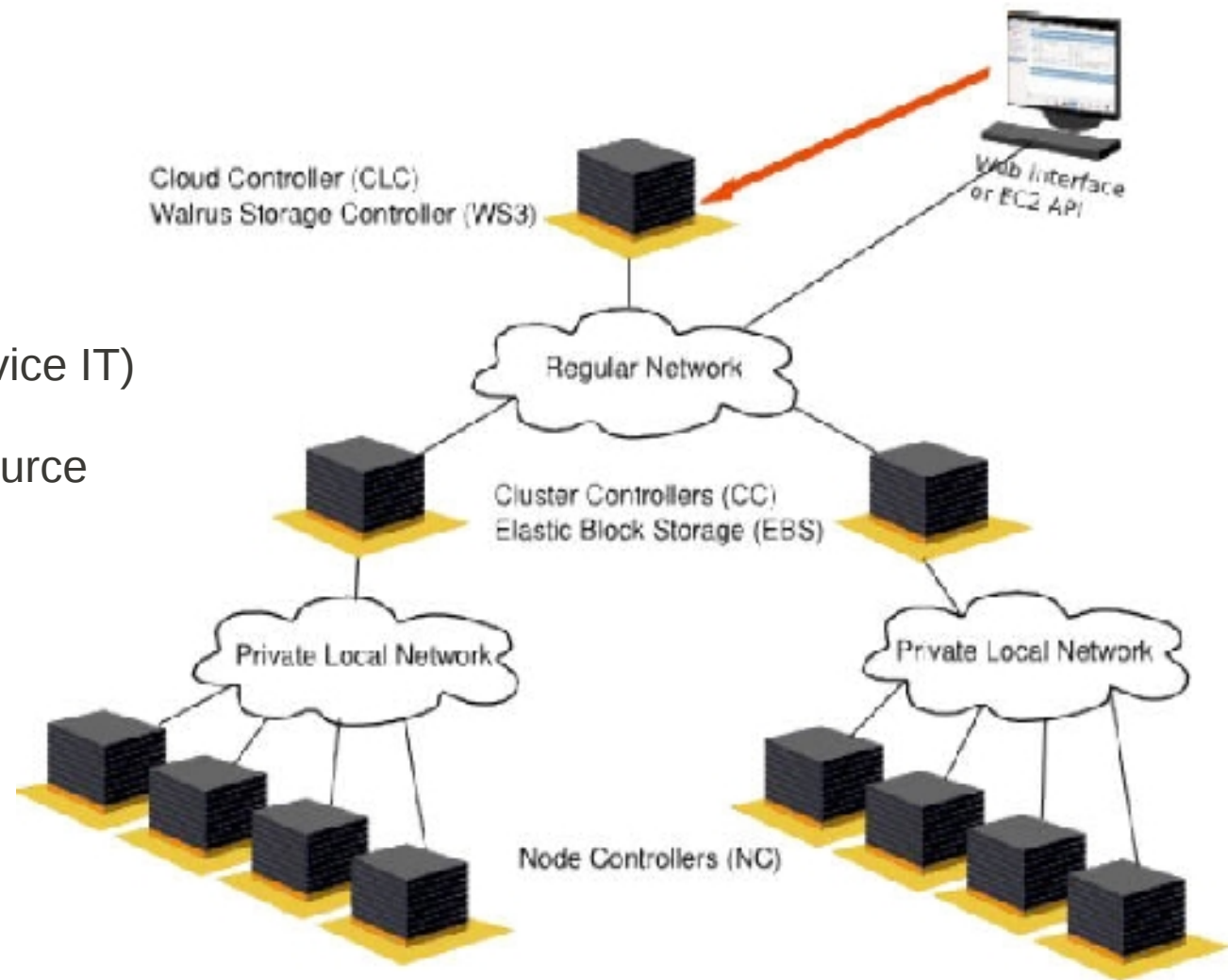


Compatible with EC2

Rapid Deployment

Optimize resources (Self-service IT)

Secure, trusted and Open Source





SME Applications

- Apache (LAMP), File & Print (Samba, NFS, Cups)
- AD Integration (Likewise) & OpenLDAP
- Databases (MySQL & PostgreSQL)
- Backup Utilities (Bacula)



SME Applications

- Cluster Stack for High Availability Clustering
- Infrastructure services: DNS, DHCP, Mail Server
- CRM, ERP (OpenBravo) & CMS (Alfresco)

Ubuntu 10.10 ISVs





Essential

Standard

Advanced

Dedicated Landscape

Premium Service Engineer

Ubuntu Enterprise Cloud

Advanced support
24x7

Standard support

Hosted Landscape
Essential support
Ubuntu Assurance
Knowledge Base

Reported Use of Ubuntu



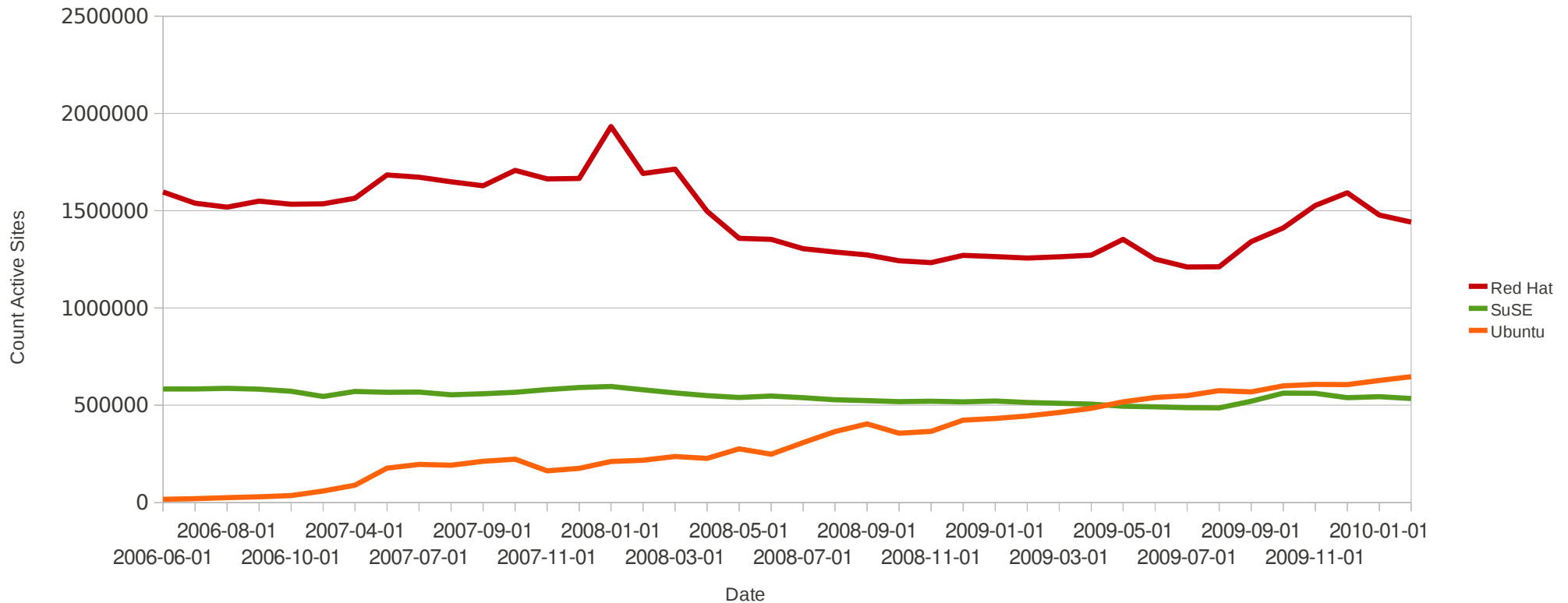
- Netcraft reported 1.1 million websites hosted by Ubuntu systems in October 2010
- IDC show Ubuntu accounting for 5% share in Linux deployments
- In the 2009 Data Center Purchasing Survey, Ubuntu share moved substantially from 9% to 14%



THE 2009 DATA CENTER
PURCHASING SURVEY REPORT

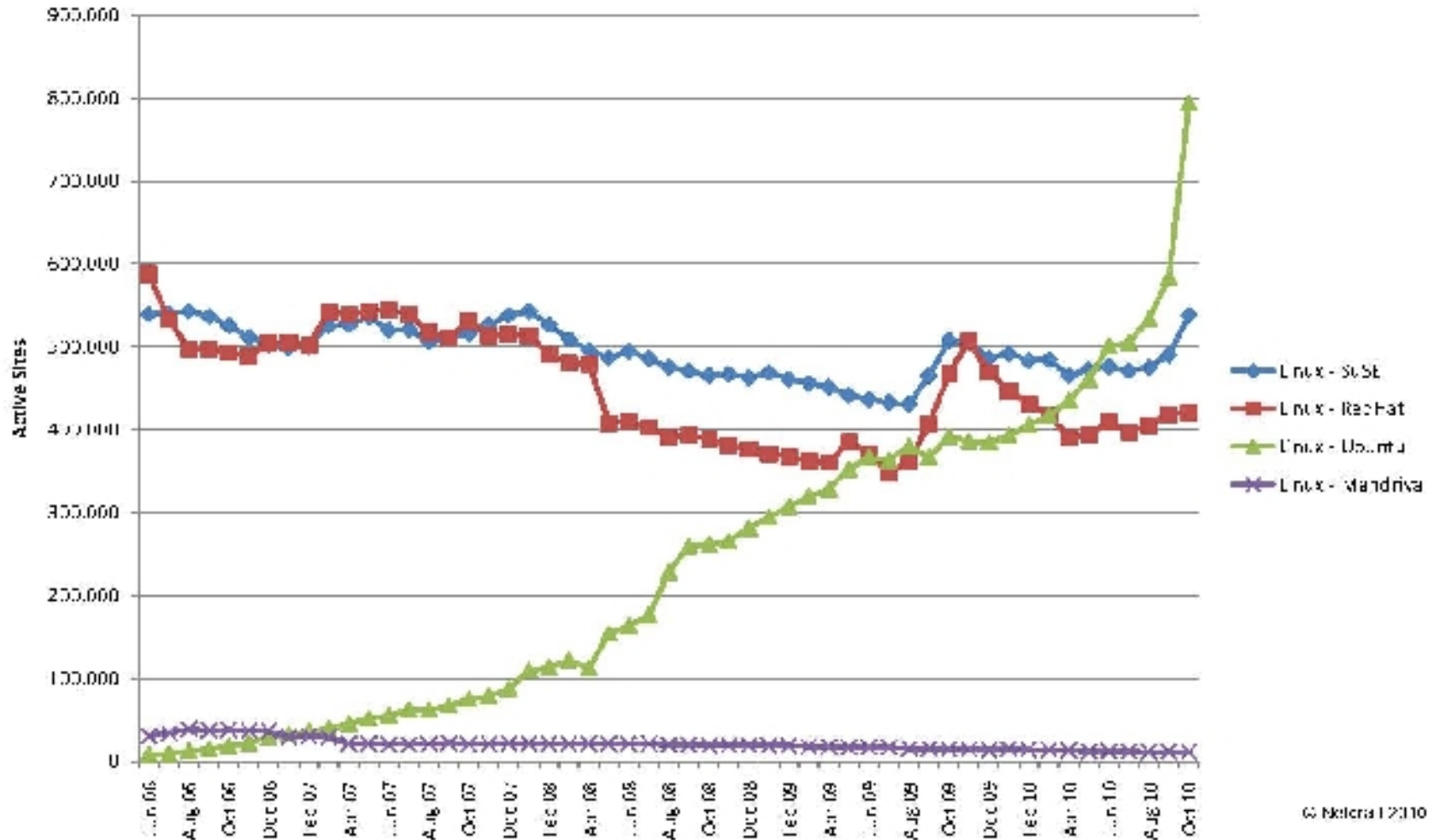


Global Active Site Trend





Linux Distribution Trend (Active Sites, EMEA)



© Netcraft 2010



Wikimedia Foundation



“Ours is an open source infrastructure that millions of people use and thousands of people work on, so it has to be reliable, scalable and secure. Ubuntu fits the bill.”

CTO, Wikipedia Foundation

Reference Customers



WIKIPEDIA
The Free Encyclopedia



LA POSTE



oxfordarchaeology



southsouthsouth





CANONICAL

Thank You